



# Mobilgrease FM Series

## Premium greases for the food and beverage industry



**Premium quality greases engineered to meet increasing global food industry requirements.** NSF H1 registered and formulated with high-quality basestocks and performance additives, the Mobilgrease FM Series has been designed to meet the demands of the global food and beverage industry. These multipurpose greases offer the professional processor outstanding lubrication and long service life in a wide range of operating environments — from the oven to the freezer; and from high levels of contamination from water, steam, and cleaning agents. Industries include food and beverage processing and packaging, animal feed manufacturing, and pharmaceuticals.

**A wide range of applications so things run more smoothly.** Formulated with a highly shear-stable thickener system, Mobilgrease FM Series greases provide long-term corrosion protection for your critical food processing equipment. They also offer a high degree of resistance to water washout even during frequent, highly pressurized cleaning operations.

Mobilgrease FM 222 (ISO VG 220, NLGI 2) is designed as a multipurpose grease for a wide range of applications including bearings, joints, pumps, and mixer lubrication. Mobilgrease FM 101 (ISO VG 100, NLGI 1) has been developed for excellent pumpability in centralized systems, even operating at low temperatures.

**Registered for use in the food processing industry.** Mobilgrease FM Series products are NSF H1 registered, increasingly requested by major food retailers and government agencies worldwide. They are also suitable under Halal and Kosher dietary law and are formulated to be gluten-, nut- and wheat-free, allowing increased flexibility in the processing plant. They are manufactured, filled, and quality tested in equipment that minimizes the risk of cross-contamination.

## High-Performance Benefits

### Water tolerance and rust protection

Excellent equipment protection in the presence of water, steam, and cleaning agents. Resists water washout and water sprayoff.

### Structural stability

High degree of shear stability provides for longer intervals between re-lubrication.

### Pumpability

Mobilgrease FM 101 is designed for optimum performance in centralized lubrication systems where pumpability over a range of temperatures is desired.

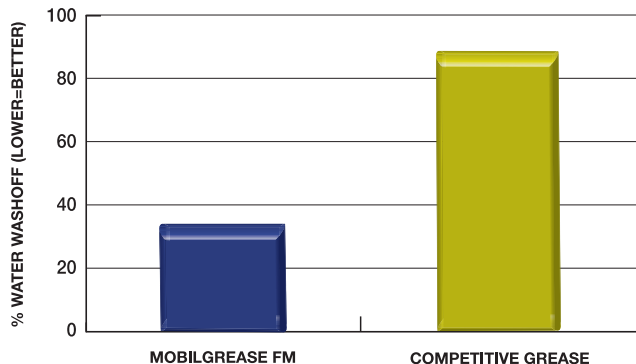
### Corrosion Protection

High degree of corrosion resistance even in harsh environments where washdown and cleaning are frequent.

# Mobilgrease FM Series — Performance

## Adhesiveness and Water Resistance

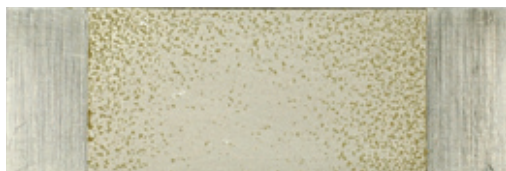
ASTM D-4049 WATER SPRAYOFF



In ASTM D-4049 Water Sprayoff testing, Mobilgrease FM Series shows outstanding resistance to water sprayoff, allowing maximum protection in environments where washdowns are common. As the graph and images demonstrate, Mobilgrease FM Series resists water sprayoff with only a 33% loss of grease compared with an 88% loss of grease from a competitive grease.



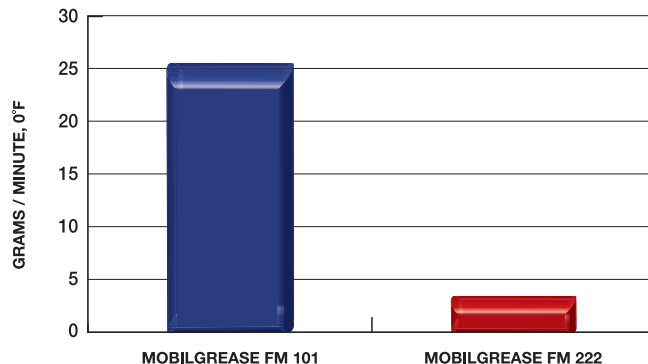
MOBILGREASE FM 222 (33% LOSS)



COMPETITOR FM GREASE (88% LOSS)

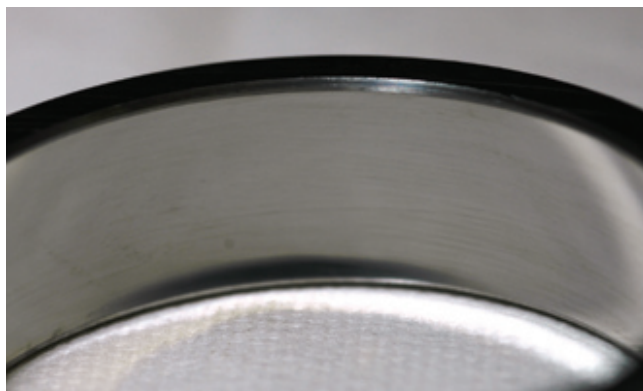
## Grease Mobility

USS MOBILITY, 0°F, G/MINUTE



Mobilgrease FM 101 is designed to have excellent low-temperature mobility and pumpability while maintaining water and corrosion resistance and an acceptable level of adhesiveness.

## Corrosion Resistance



Mobilgrease FM Series demonstrates excellent corrosion resistance in EMCOR testing, yielding the best rating of 0,0. As shown in the image above, there is no visible corrosion from the Mobilgrease FM Series EMCOR test sample.

### Typical Data

Thickener Type

Color

NLGI Grade

Base Oil Viscosity, 40°C

EMCOR Rust Protection

Typical Applications

DIN Classification

### Mobilgrease FM 101

Aluminum Complex

White

1

100

0,0

Central systems

KPF1K-20

### Mobilgrease FM 222

Aluminum Complex

White

2

220

0,0

Multi-purpose bearings, joints

KPF2K-20

For more information on Mobilgrease FM Series and other Mobil Industrial Lubricants and services, please contact your local company representative or visit [www.mobilindustrial.com](http://www.mobilindustrial.com).